

Plans and Projects

Part 3

2005: IRRIGATION DITCH APPARENT



An aerial photograph of a river bend. The river is dark brown and flows from the top left towards the bottom right. The left bank is heavily wooded with green trees. The right bank is a grassy field. A red arrow points from a text box at the top to a crack in the grass on the right bank. Another red arrow points from a text box at the bottom to a vertical double-headed arrow indicating a gap in the bank.

2014: IRRIGATION DITCH LOST TO BANK EROSION

APPROXIMATE BANK LOSS 30 FT



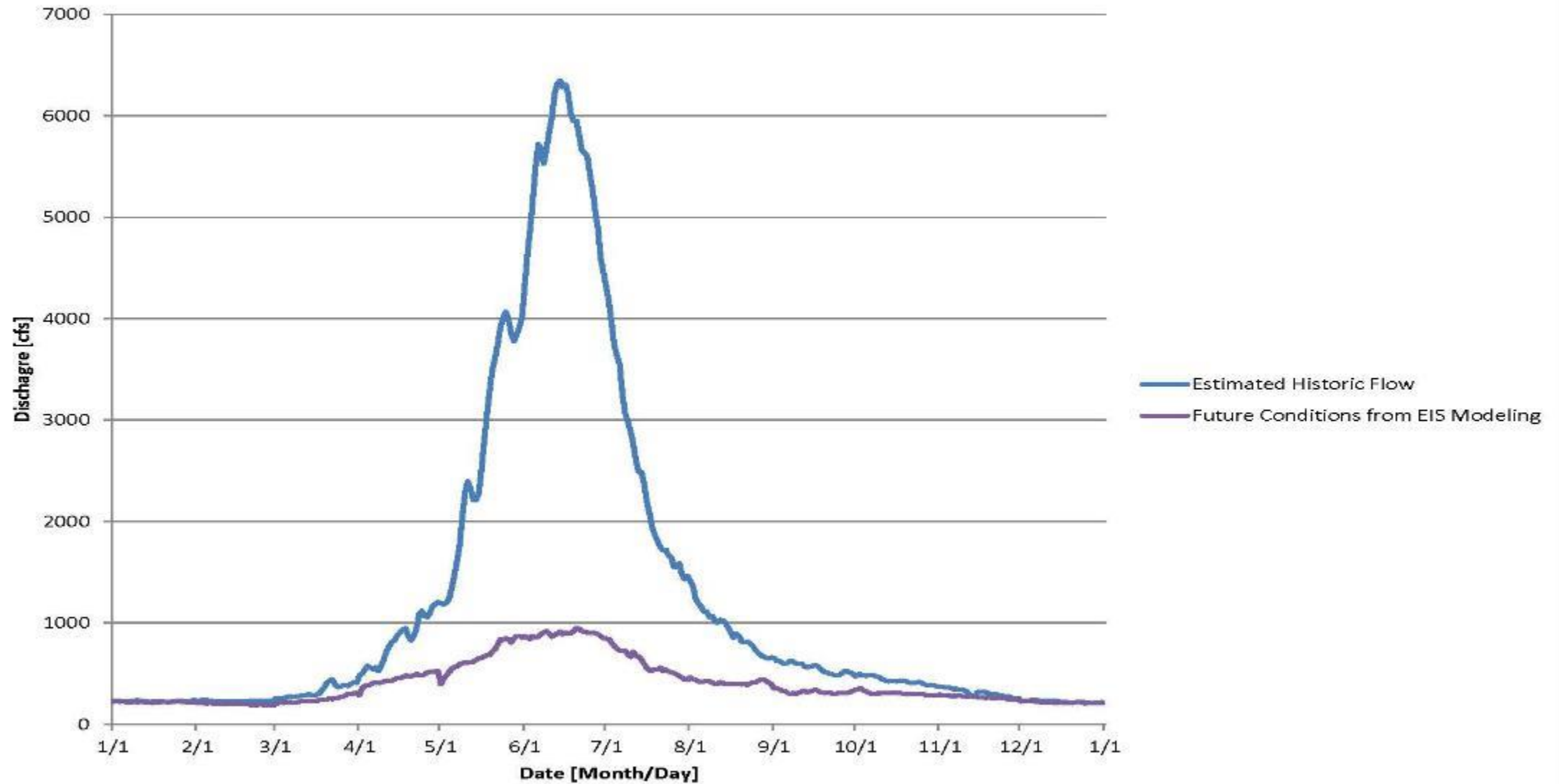


12.08.

Before



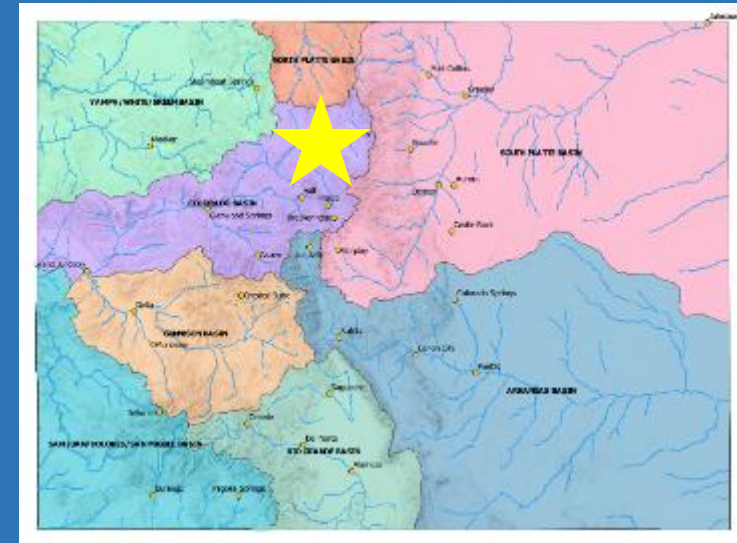
Colorado River Hydrology Below Troublesome



Colorado River, Grand County

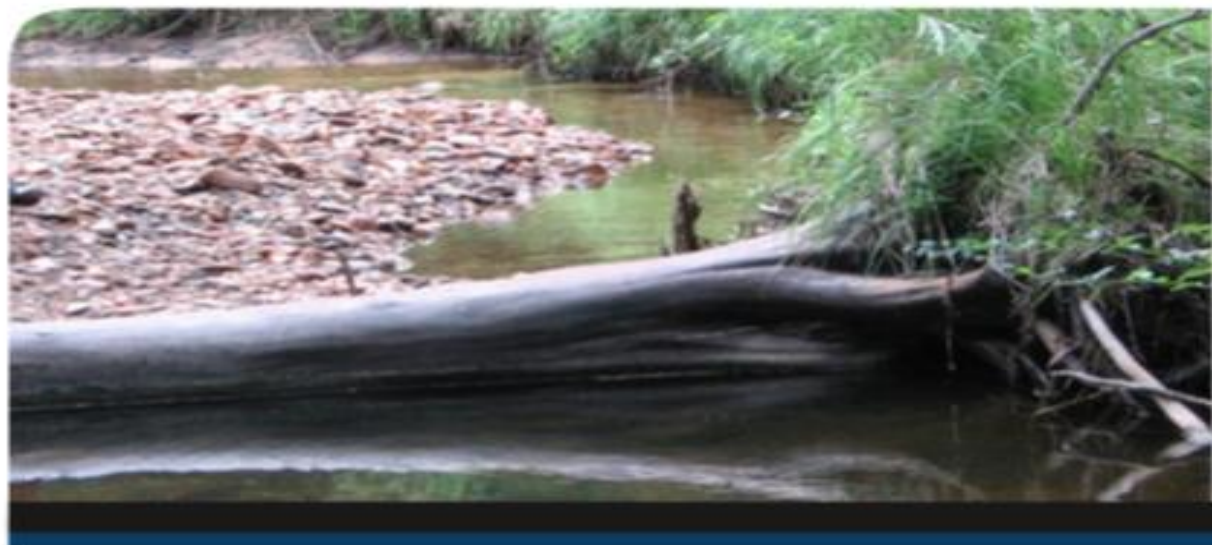


- Irrigators in Lands in the Vicinity of Kremmling (ILVK)
- RCPP Funding





AUGUST 2010



DRAFT REPORT

STREAM MANAGEMENT PLAN GRAND COUNTY, COLORADO PHASE 3

PREPARED FOR GRAND COUNTY, COLORADO
WITH SUPPORT FROM
DENVER WATER
NORTHERN COLORADO WATER CONSERVANCY DISTRICT

PREPARED BY
TETRA TECH, INC.

DRAFT

A photograph of a river with a wooden structure in the foreground. The river is flowing from the background towards the foreground, with a wooden structure (possibly a dam or bridge) visible in the lower right. The water is turbulent and white with foam. The background shows a grassy bank and some trees under a cloudy sky.

**ILVK Upper Colorado River
Irrigation and Restoration
Assessment Phase 1:
K.B. Ditch to Blue River.**

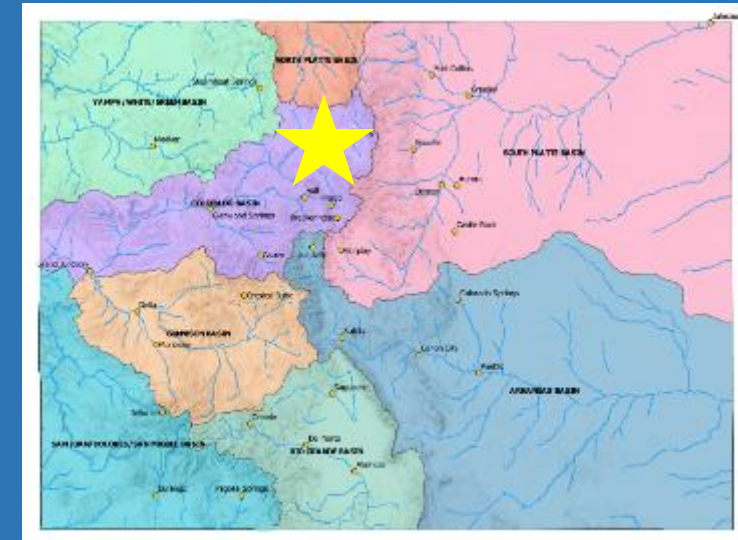


Colorado River, Grand County

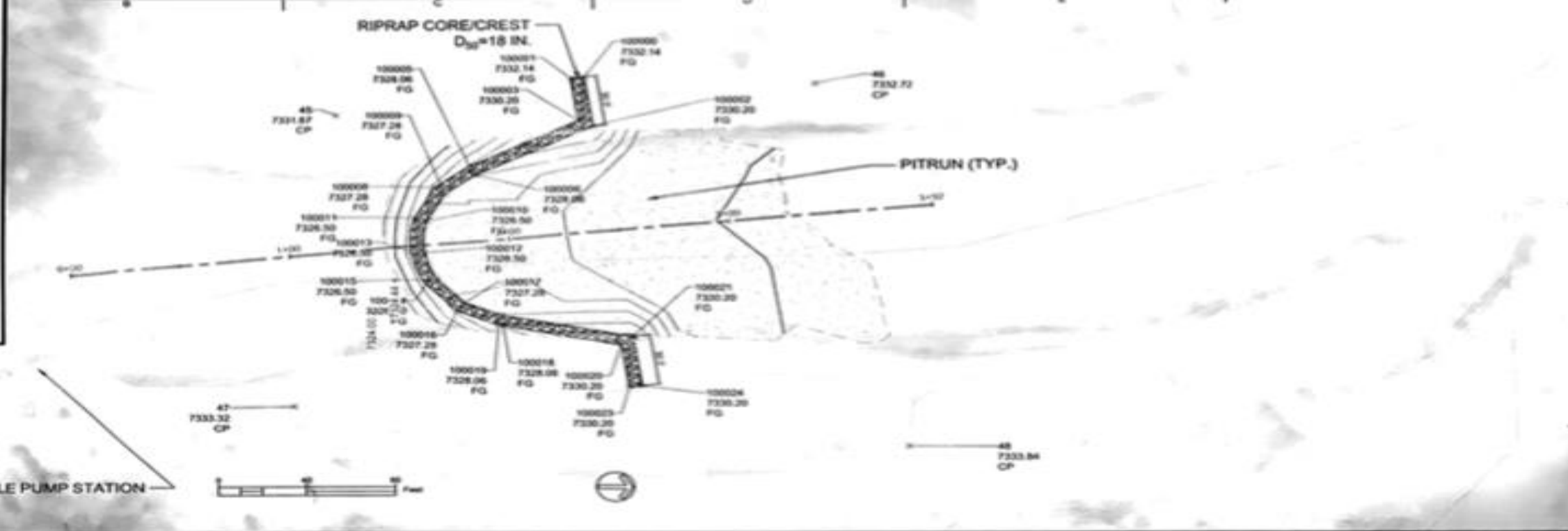


Grade Control Riffles

- Habitat
- Pumping



NO.	ELEVATION	DESCRIPTION
100000	7332.14	FG
100001	7332.14	FG
100002	7330.20	FG
100003	7330.20	FG
100004	7330.20	FG
100005	7328.06	FG
100006	7328.06	FG
100007	7328.06	FG
100008	7327.28	FG
100009	7327.28	FG
100010	7327.28	FG
100011	7326.50	FG
100012	7326.50	FG
100013	7326.50	FG
100014	7326.50	FG
100015	7326.50	FG
100016	7327.28	FG
100017	7327.28	FG
100018	7328.06	FG
100019	7328.06	FG
100020	7330.20	FG
100021	7330.20	FG
100022	7330.20	FG
100023	7330.20	FG
100024	7330.20	FG
100025	7330.20	FG
100026	7330.20	FG
100027	7330.20	FG
100028	7330.20	FG
100029	7330.20	FG
100030	7330.20	FG
100031	7330.20	FG
100032	7330.20	FG
100033	7330.20	FG
100034	7330.20	FG
100035	7330.20	FG
100036	7330.20	FG
100037	7330.20	FG
100038	7330.20	FG
100039	7330.20	FG
100040	7330.20	FG
100041	7330.20	FG
100042	7330.20	FG
100043	7330.20	FG
100044	7330.20	FG
100045	7330.20	FG
100046	7330.20	FG
100047	7330.20	FG
100048	7330.20	FG
100049	7330.20	FG
100050	7330.20	FG
100051	7330.20	FG
100052	7330.20	FG
100053	7330.20	FG
100054	7330.20	FG
100055	7330.20	FG
100056	7330.20	FG
100057	7330.20	FG
100058	7330.20	FG
100059	7330.20	FG
100060	7330.20	FG
100061	7330.20	FG
100062	7330.20	FG
100063	7330.20	FG
100064	7330.20	FG
100065	7330.20	FG
100066	7330.20	FG
100067	7330.20	FG
100068	7330.20	FG
100069	7330.20	FG
100070	7330.20	FG
100071	7330.20	FG
100072	7330.20	FG
100073	7330.20	FG
100074	7330.20	FG
100075	7330.20	FG
100076	7330.20	FG
100077	7330.20	FG
100078	7330.20	FG
100079	7330.20	FG
100080	7330.20	FG
100081	7330.20	FG
100082	7330.20	FG
100083	7330.20	FG
100084	7330.20	FG
100085	7330.20	FG
100086	7330.20	FG
100087	7330.20	FG
100088	7330.20	FG
100089	7330.20	FG
100090	7330.20	FG
100091	7330.20	FG
100092	7330.20	FG
100093	7330.20	FG
100094	7330.20	FG
100095	7330.20	FG
100096	7330.20	FG
100097	7330.20	FG
100098	7330.20	FG
100099	7330.20	FG
100100	7330.20	FG



T.A. ENGLE PUMP STATION

